

Grid information

Number of 220 kV and ≥ 330 kV circuits on cross-frontier transmission lines as of 31 December 2009 between ENTSO-E countries

	CH	CZ	DE	DK ⁵	EE ⁴	FR	GR	HR	HU	IT	LU	LV	ME	MK	NI ²	NL	NO	PL	PT	RO	RS	SE ³	SI	SK
AT	2/2	2/2	11/3						2/1	1/-														1/2
BA								7/2					2/1									1/1		
BE						2/3					2/-						-/4							
BG							-/1							-/1				1/4		-/1				
CH	5/7					5/5				5/5														
CZ	-/4																	2/2						2/3
DE	2/3				2/4						8/-						-/6	2/2				-/1		
DK ⁵																	2/1							2/2
EE												-/3												
ES			2/2																3/4					
FI ⁴	-/1																1/-							1/3
FR									3/3															
GB ²			2/-											2/-										
GR							-/1							-/2										
HR							-/2														-/1			2/3
HU																				-/2	-/1			-/2
IE												2/-												
IT																								1/1
LT			-/4																					
ME																					2/1			
MK																					2/1			
NO																							1/4	
PL																						-/1		-/2
RO																								

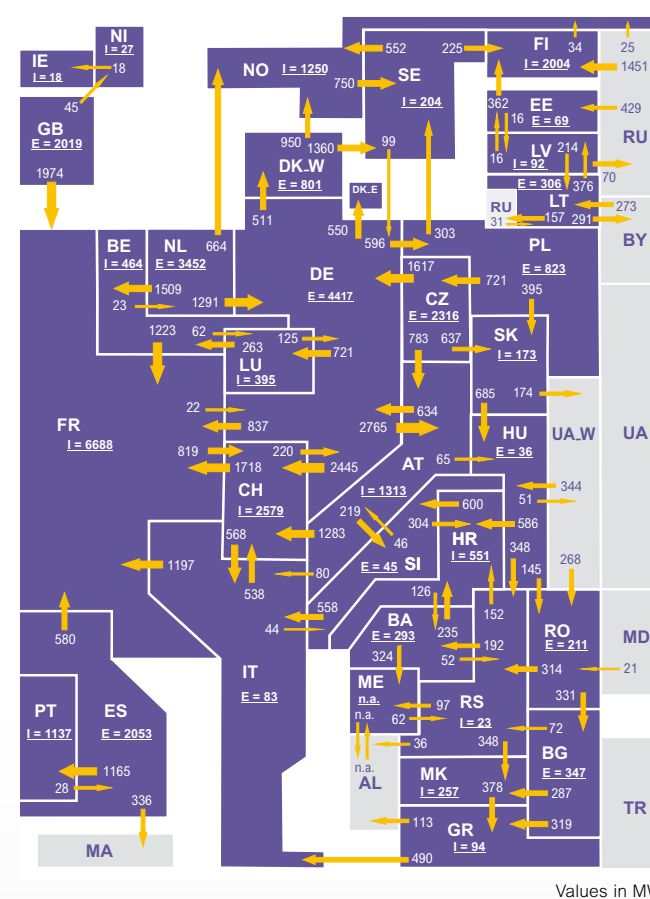
Overview circuit length in km

Regional group	220 kV of which cable	330 kV of which cable	380-750 kV of which cable
Continental Europe ¹	120885	1965	111051
Nordic	4286	174	14400
Baltic	184	0	2919
GB ² , IE, NI ²	4468	653	8655
CY ³	1227	120	0

¹ Including data of AT year 2000, HR year 2004, DE and DK, W year 2008
² 275 kV instead of 220 kV
³ 133 kV
⁴ additional one 150 kV between FI and EE
⁵ 285 kV instead 220 kV DC lines

Load flows night

16 December 2009, 3:00 a.m. CET

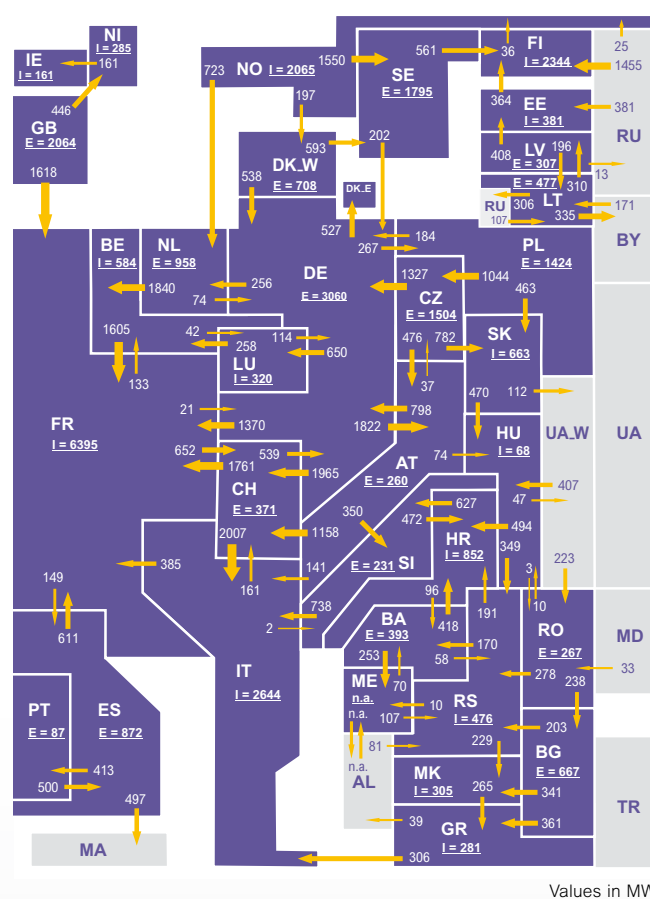


Legend: ■ ENTSO-E members ■ Not ENTSO-E members

Sum of physical power flows: ENTSO-E = 41 263 MW
 Total = 45 333 MW

Load flows day

16 December 2009, 11:00 a.m. CET

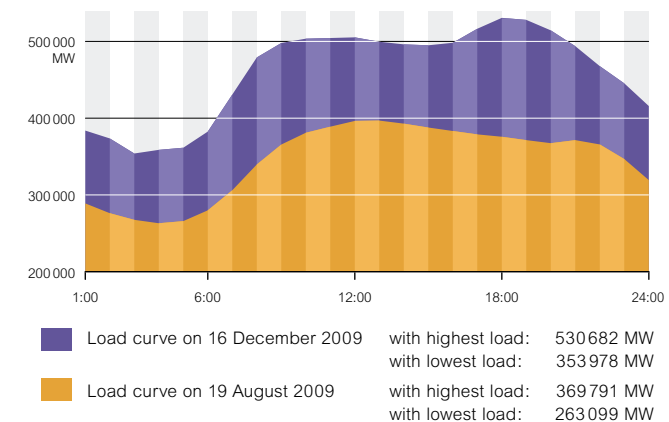


I = Import balance E = Export balance

Sum of physical power flows: ENTSO-E = 39 618 MW
 Total = 43 850 MW

Consumption on the 3rd Wednesday 2009

ENTSO-E load diagram on the 3rd Wednesday of August and December 2009¹



Maximum and minimum load of each country on 16 December 2009 in MW¹

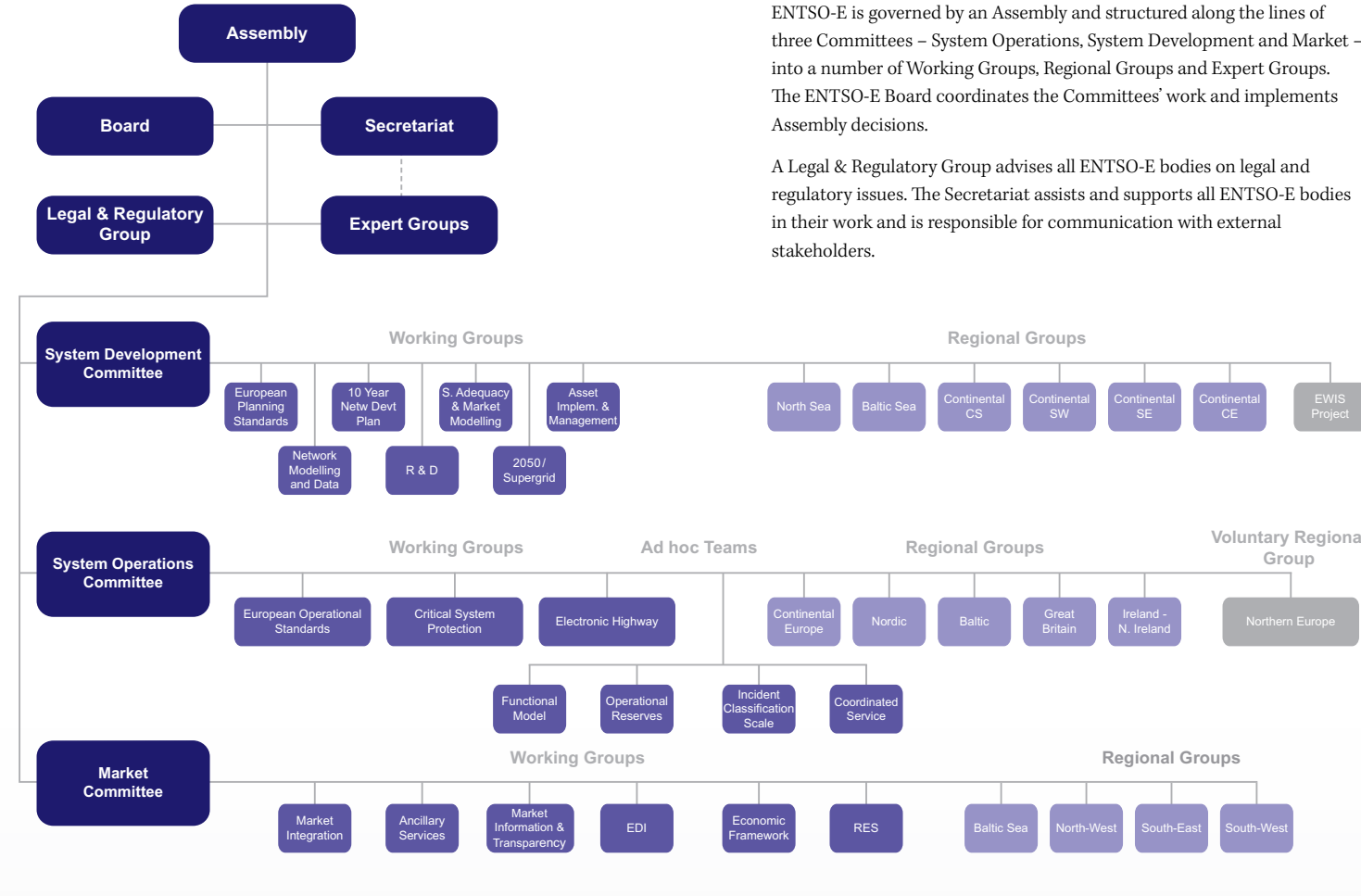
Country	Lowest value	Highest value	Country	Lowest value	Highest value
AT	6 186	9 675	IE	2 495	4 594
BA	1 097	1 890	IS	1 864	2 045
BE	9 808	13 501	IT	27 934	50 963
BG	4 028	6 207	LT	950	1 630
CH	7 459	10 261	LU	600	855
CZ	7 389	9 836	LV	554	1 269
CY	392	756	ME ²	415	606
DE	53 755	79 111	MK	808	1 312
DK	n.a.	n.a.	NI	851	1 626
DK, W	1 970	3 545	NL	10 068	17 714
EE	977	1 508	NO	15 622	20 521
ES	15 710	44 058	PL	14 792	22 425
FI	11 520	13 943	PT	5 402	9 241
FR	70 600	89 719	RO	5 735	8 035
GB	32 033	55 200	RS	4 649	6 923
GR	4 597	7 864	SE	16 235	23 133
HR	1 636	2 948	SI	1 095	1 895
HU	4 171	6 252	SK	3 019	4 056

¹ Values are calculated to represent 100% of the national values
² as of 17 December 2008

Members of ENTSO-E

AT	Austria	TIWAG Netz VERBUND APG VKW-Netz	TIWAG Netz AG Verbund - Austrian Power Grid VKW-Netz AG
BA	Bosnia Herzegovina	ISO BiH	Nezavisni operator sustava u Bosni i Hercegovini
BE	Belgium	Elia	Elia System Operator SA
BG	Bulgaria	ESO	Electroenergien Sistemem Operator EAD
CH	Switzerland	swissgrid	swissgrid ag
CY	Cyprus	Cyprus TSO	Cyprus Transmission System Operator
CZ	Czech Republic	ČEPS	ČEPS, a.s.
DE	Germany	EnBW TNG transpower Amprion 50Hertz	EnBW Transportnetze AG transpower stromübertragungs GmbH Amprion GmbH 50Hertz Transmission GmbH
DK	Denmark	Energinet.dk	Energinet.dk
EE	Estonia	Elering OÜ	Elering OÜ
ES	Spain	REE	Red Eléctrica de España S.A.
FI	Finland	Fingrid	Fingrid Oyj
FR	France	RTE	Réseau de Transport d'Electricité
GB	United Kingdom	National Grid SONI (NI) SSE SPTransmission	National Grid Electricity Transmission plc System Operation Northern Ireland Ltd Scottish and Southern Energy plc Scottish Power Transmission plc
GR	Greece	HTSO	Hellenic Transmission System Operator S.A.
HR	Croatia	HEP-OPS	HEP-Operator prijenosnog sustava d.o.o.
HU	Hungary	MAVIR ZRT	MAVIR Magyar Villamosenergia-ipari Állami Rendszerirányító Zártkörűen Működő Részvénytársaság
IE	Ireland	EirGrid	EirGrid plc
IS	Iceland	Landsnet	Landsnet hf
IT	Italy	Terna	Terna - Rete Elettrica Nazionale SpA
LT	Lithuania	Litgrid UAB	Litgrid UAB
LU	Luxembourg	Creos Luxembourg	Creos Luxembourg S.A.
LV	Latvia	Augstsprieguma tikis	AS Augstsprieguma tikis
ME	Montenegro	AD Prenos	AD Prenos
MK	FYROM	MEPSO	Macedonian Transmission System Operator AD
NL	Netherlands	TenneT TSO	TenneT TSO B.V.
NO	Norway	Statnett	Statnett SF
PL	Poland	PSE Operator	PSE Operator S.A.
PT	Portugal	REN	Rede Eléctrica Nacional, S.A.
RO	Romania	Transelectrica	C.N. Transelectrica S.A.
RS	Serbia	EMS	JP Elektromreža Srbije
SE	Sweden	SVENSKA KRAFTNÄT	Åfärsverket Svenska Kraftnät
SI	Slovenia	ELES	Elektro Slovenija d.o.o.
SK	Slovak Republic	SEPS	Slovenska elektrizacna postovna sustava, a.s.

Structure of ENTSO-E



ENTSO-E office holders

Assembly

President: Daniel Dobbeni,
Elia System Operator (BE)
 Vice President: Jukka Ruusunen,
Fingrid (FI)

Board

Chairman of the Board:
 Graeme Steele, *National Grid (UK)*
 Vice Chairwoman of the Board:
 Malgorzata Klawe, *PSE Operator (PL)*

Legal & Regulatory Group

Chairwoman: Jacqueline van
 Overbeek de Meyer,
TenneT TSO (NE)

System Development Committee

Chairman: Jean Verseille, *RTE (FR)*

System Operations Committee

Chairman: Klaus Kleinekorte,
Amprion (DE)

Market Committee

Chairman: Juha Kekkonen,
Fingrid (FI)

Secretariat

Secretary-General:
 Konstantin Staschus